

Containina Weigha™

High Accuracy Loadcell Frame Suit 20' or 40' ISO Containers



Features:

- Options for 20' or 40' ISO Containers
- ISO Liquid Tanks
- Loading bulk products to max weight
- Checking shipping weights
- 40,000kg capacity
- Sits on standard twist-locks for transportation
- No need to truck containers to/from a weighbridge for weights

Elphinstone "Containina Weigha" features a rugged frame with integrated loadcells offering simple, portable weighing for ISO shipping containers



Containina Weigha frame with loadcells mounted at corners



Load container with forklift via forklift ramps that lock into frame



Sits securely on any hard flat surface



Weigh while loading

P:\Brochures\Containina Weigha\Containina Weigha Brochure V-2.indd

Containina Weigha™

High Accuracy Loadcell Frame Suit 20' or 40' ISO Containers

Available Options For Your Application



Forklift ramp, 2.4m full width



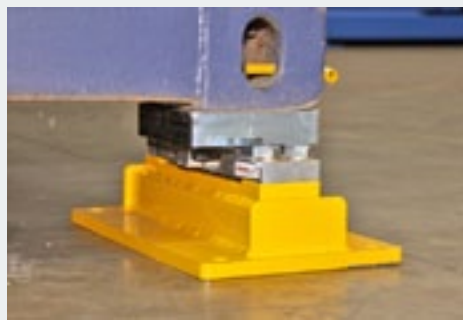
LED outdoor scoreboard



Easyweigh Multi radio remote



Twist locks



Stationary feet for container weighing



X320 Weatherproof indicator



Elphinstone EasyView



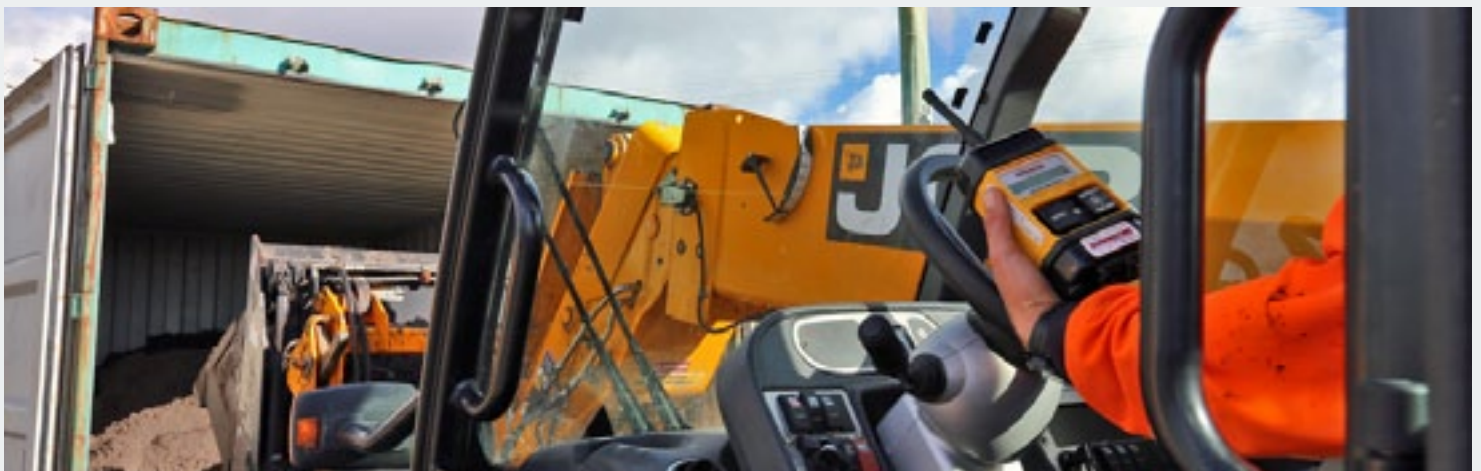
L5500 Printer



Remote Display



Limit Lights



P:\Brochures\Containina Weigha\Containina Weigha Brochure V-2.indd



Manufacturers and installers of on-vehicle and stationary weighing systems since 1976