

Load Binder Winches

Elphinstone Automatic (Air) and Manual Tensioner



Auto Tensioner (Air) (30/303899)

Features:

- LC 5000kg (Lashing capacity)
- Suits 75mm (3") webbing
- Automatic tensioning
- Adjustable tension
- Manual override
- Sealed roller bearings
- Proven rugged design
- Pre-assembled and adjusted
- Right or left hand

Manual Winch (30/177980)

Features:

- LC 5000kg
- Suits 75mm (3") webbing
- Easy tensioning
- Pre-tension up to 2000kg
- Replaceable nylon bushes
- Proven rugged design
- Pre-assembled and adjusted
- Right or left hand
- Multi-purpose winch bar
- Accommodates straps up to 12m in length



Tested to "AS/NZS-4380:2001 Motor Vehicles - Cargo Restraint Systems".
Webbing straps not included. 9m x 75mm shown for illustrative purposes only.

Specifications subject to change without notice

Winch Mounting and Accessories

Suit Elphinstone Load Binders

All Elphinstone winch accessories are compatible with both Auto Tensioner (Air) and Manual Winches

Webbing Strap 9m x 75mm (60/WC-5HK)



LC 5000kg strap with hook and keeper

Chain Kit suit Elphinstone (60/177023)



6mm Rud ICE 120 Short strap, straight pull LC 3600kg

Webbing Strap 9m x 75mm (60/WC-5)



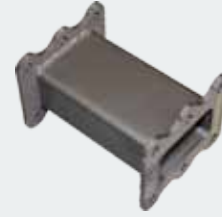
LC 5000kg with triangle hook. Also comes in various lengths to suit specific applications

Remote Release Kit (30/177004)



Safely release winch strap from opposite side of the trailer. Only suits strap with triangle hook.

Mounting extensions



236mm Straight (30/177981)
236mm 50mm offset (30/177983)
Strap Catch (30/177957)

Winch Bar 22mm/Hex (30/177986)



Hex suits new winch and 22mm bar end suits older type winches with hole

Multiple Mounting Options for Elphinstone Load Binders



Frame Mounted



Under Tray Mounted



Bolster Mounted

All Elphinstone winches and accessories are tested to AS/NZS 4380-2001.

Specifications subject to change without notice

P:\Brochures\Winches\Winch Brochure V-2.indd



Manufacturers and installers of on-vehicle and stationary weighing systems since 1976