

Elphinstone Engineering Aust. Pty. Ltd. ACN 009 533 984

Trading as: **Elphinstone Engineering**

Head Office - Tasmania

PH. (03) 6257 3242

FAX. (03) 6257 3573

E-mail: tri.office@elph.com.au

Victoria

PH. (03) 9311 6366

FAX. (03) 9311 6466

E-mail: vic.office@elph.com.au

Western Australia

PH. 1800 030 019

Queensland

Internet Site: www.elph.com.au



SPRING SUSPENSION -
REAR
AIR SUSPENSION FRONT -
K HITCH AXLES
ABC EBS BRAKES

POLE TRAILER MANUAL

NOTE – THERE ARE SOME MINOR DESIGN DIFFERENCES BETWEEN THE 2011 AND 2012 MODEL
THE PHOTOS DEPICTED IN THIS MANUAL ARE THE 2012 MODEL



BPW AIR SUSPENSION -
FRONT AND REAR
BPW AXLES FRONT AND REAR
BPW EBS BRAKES



Elphinstone Engineering Aust. Pty. Ltd. ACN 009 533 984

Trading as: **Elphinstone Engineering**
Victoria

Western Australia Queensland

Head Office - Tasmania

PH. (03) 6257 3242

FAX. (03) 6257 3573

E-mail: tri.office@elph.com.au

PH. (03) 9311 6366

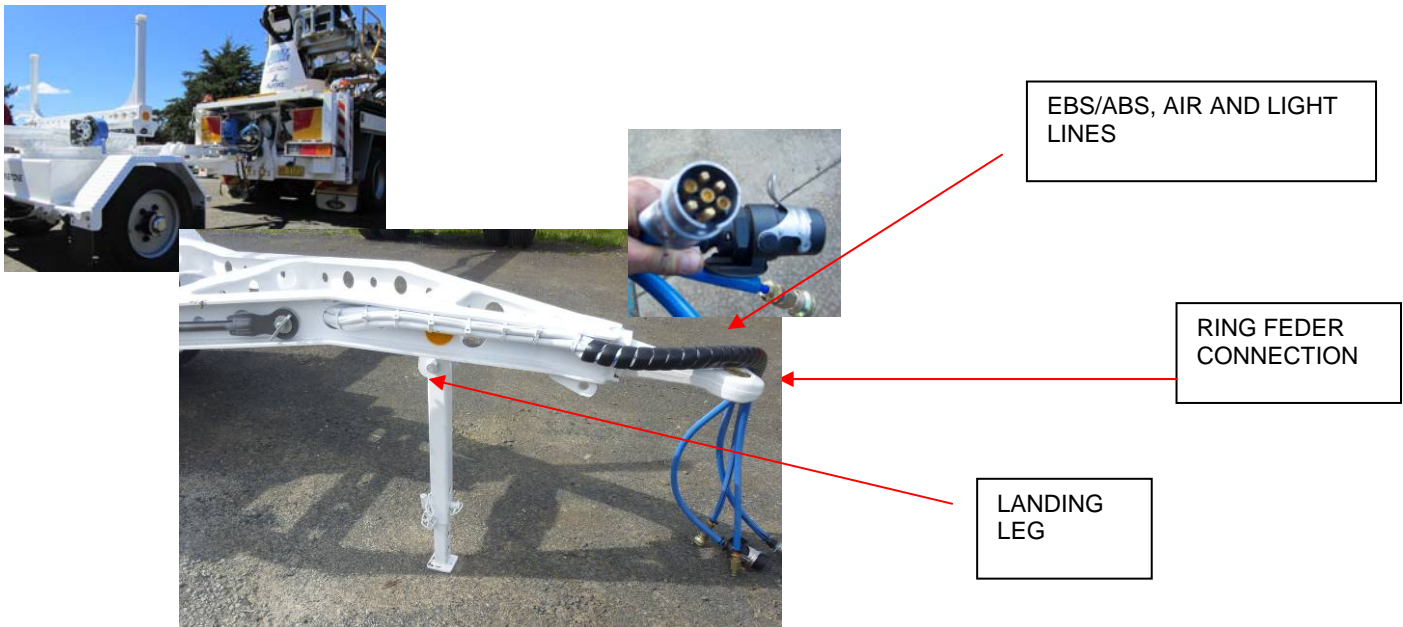
FAX. (03) 9311 6466

E-mail: vic.office@elph.com.au

Internet Site: www.elph.com.au

PH. 1800 030 019

OPERATOR'S MANUAL



HITCHING TO TRUCK

1. Connect trailer to truck by ring feder connection
2. Connect safety chains
3. Plug in EBS/ABS line and air and light cables and check they are working

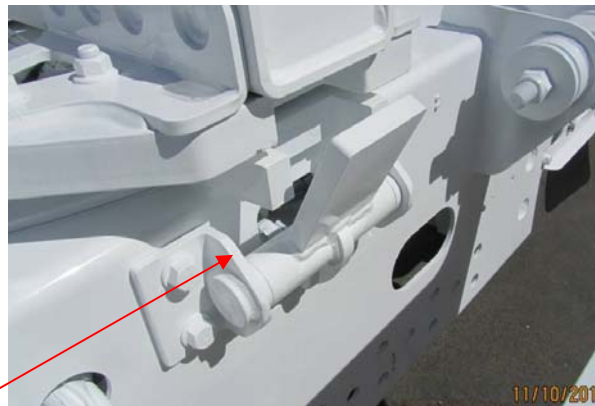


4. Fold up and secure landing leg



UNHITCHING – REVERSE PROCEDURE

Ensure air lines and cables are disconnected before unlocking ring feder



5. Ensure that turntable lock is disengaged before moving
6. Turntable lock should only be engaged when reversing.
7. Turntable lock is operated by a switch in cab of truck

AIR OPERATED AND MANUAL WINCHES – SEE SEPARATE MANUALS



AIR
OPERATED
WINCH



WINCH HANDLE



MANUAL WINCH

AIR TANKS

All Elphinstone trailers are fitted with a remote release air tank drain

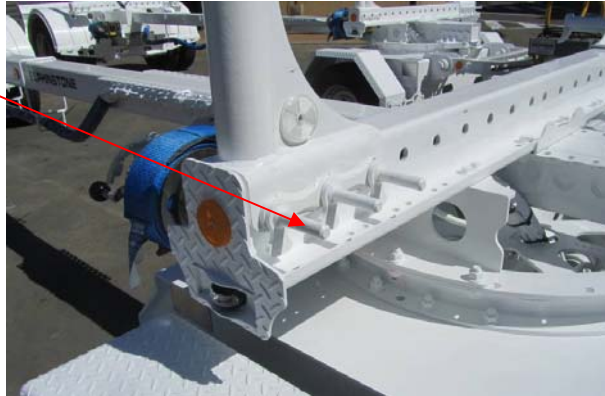
**SHOULD BE DRAINED DAILY
(DRAIN ALL WATER)**



BOLSTERS

Chocks are adjustable to various widths for different size loads.

Remove pins and move chock/pegs along bolster frame to size required



Ensure locking clips are fitted after pins are replaced



ADJUSTING POLE LENGTH

1. Remove winch handle from front of trailer
2. Loosen pole clamp stud
3. Lengthen or shorten pole as required by applying trailer park brake (red button) and reverse truck to shorten/go ahead to lengthen
4. Ensure that pole clamp stud is re-tightened





This handle also doubles as a winch handle



When running with pole shortened ensure cables are evenly spread through holders and not too close to ground

OVERSIZE

Fold oversize sign up or down as required for pole (load) length





Socket for extension lead and tail light to fit to end of load

AXLES AND SUSPENSIONS AND EBS BRAKES – SEE SEPARATE MANUALS

WHEEL STUD TENSIONS:

| | | |
|------------|-------|------------|
| Rear Axles | 22.5" | 550 ft/lbs |
| Front Axle | 17.5" | 350 ft/lbs |

BALLRACE -

Lubrication should be carried out by rotating ballrace to achieve uniform grease distribution. The intervals for re-lubrication are determined by the operating conditions. However, the ballrace should be lubricated with lithium complex grease every 25,000km, but at the least after every 3 months (or after every 2- 3 weeks under extreme operational conditions). The grease must not be mixed with other calcium base or sodium-base lubricants.

COMPLIANCE PLATE

Showing Vehicle Identification Number (VIN) is affixed to the right hand side of the dolly

