



ELPHINSTONE

SEASKEL TRAILER

INSTRUCTION MANUAL



ELPHINSTONE SEASKEL TRAILER

PROCEDURE TO CONNECT TRAILERS TO TUG TRUCK

1. **These trailers are fitted with bolt-in standard 50mm king pin and no block**



2. **Standard air fittings – 1 male; 1 female;
Supply and control for brakes
Fitted centre front of trailer**

OPERATION OF LANDING LEG

To raise landing legs make sure trailer is raised so that legs clear ground/deck.

Wind handle in **UP** direction. Stays will unlock and legs will fold up

When fully up engage safety chain. For short haul one chain is sufficient. For long distance at speed above 25km both chains (one on each side) should be engaged. Wind winch handle **DOWN** until load is taken on chains



1. In travel position – ensure safety chain is engaged in slot



Direction marked
here –
UP/DOWN



TO LOWER LEG

2. Take weight off chain (wind winch up). Undo locating chain from slot
Wind down. Handle is mounted on each side of trailer. There is an auto-brake so will hold in any position

3. Wind down to vertical position and allow stays to drop into locked position



STACKING EMPTY TRAILERS FOR FORWARD OR RETURN JOURNEYS

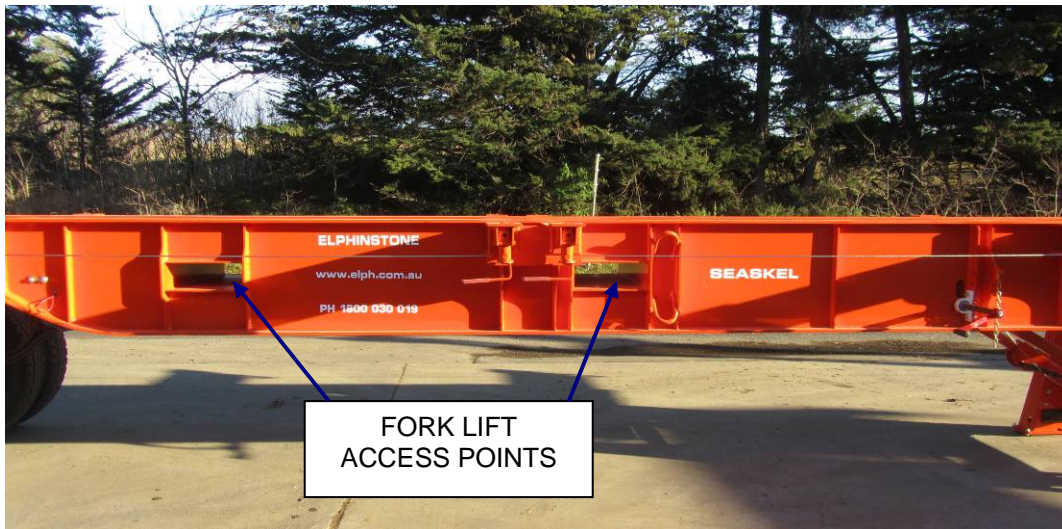
Trailers can be stacked 3 high

PROCEDURE TO STACK TRAILERS



1. Ensure that landing leg is fully down and stays locked in over centre position on each trailer

2. Lift trailer using the forklift access points



3. Ensure that tyres are firmly located in the wheel rest points





4. Ensure landing leg bump stops are sitting on top rails of bottom trailer and guides down sides of rails

TIE DOWN POINTS

There are several tie down points along the length of the trailer – both sides
 Trailer to trailer only necessary to have one 5000kg lashing capacity tie each side on central lugs

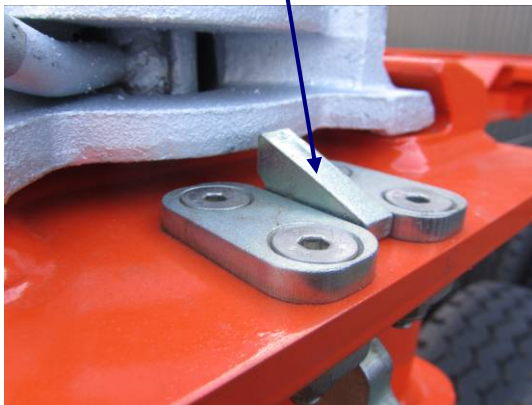


TWIST LOCKS

TO FIT TWIST LOCKS

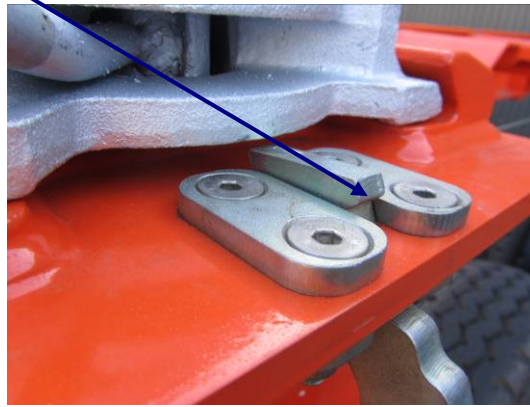
1. Twist locks should be slotted securely into the mount.

2. Ensure that lock is securely in place



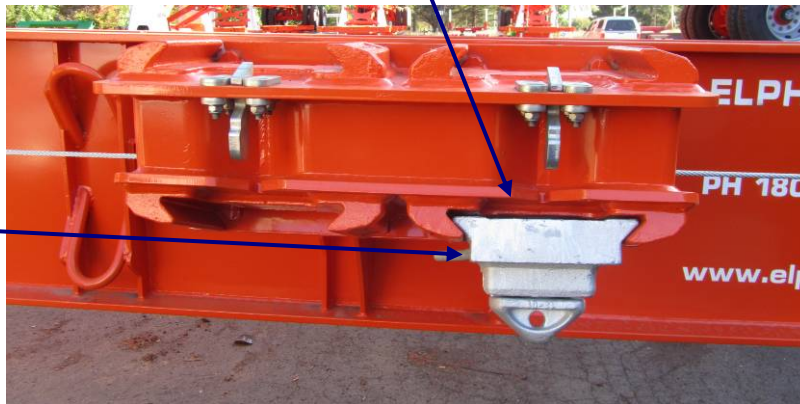
REMOVING AND STORING CENTRE TWIST LOCKS

1. Lower balance catch and pull twist lock toward you

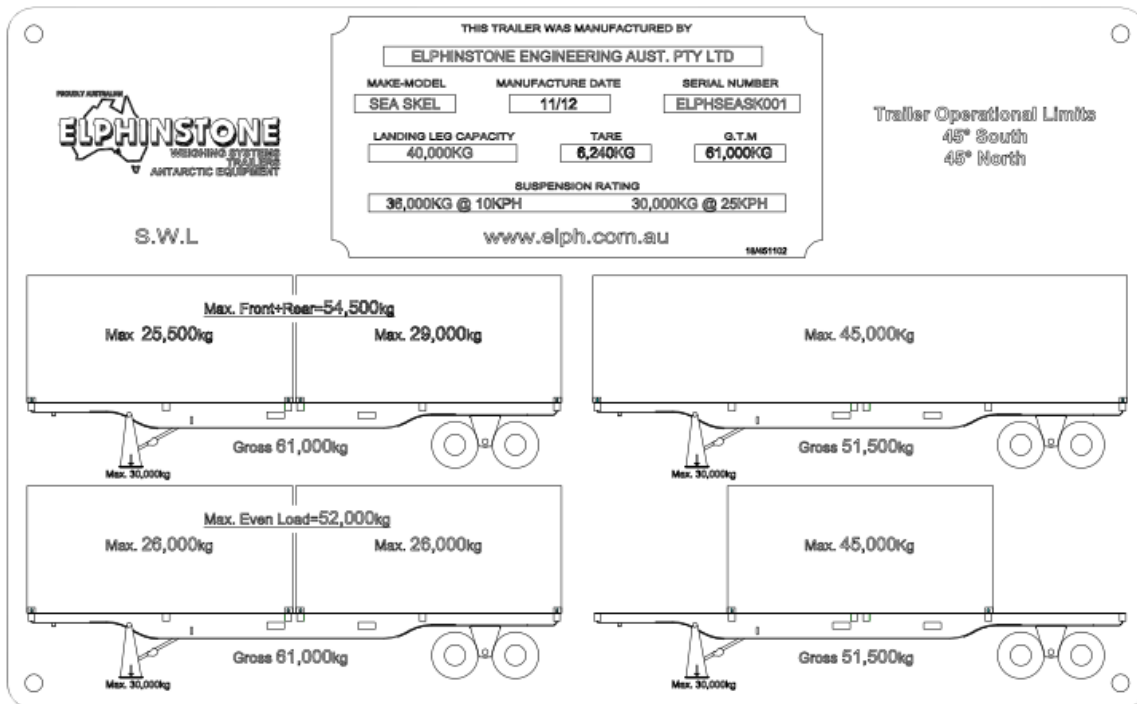


2. Push twist lock securing into the under mount ensuring that the handle inwards.

Storage
position for
centre twist
locks when
running
40' container.
Put handle
inwards



LOADING CONTAINERS ON TRAILERS ORANGE SEA SKELS 2012



When loading two containers; the heaviest container should be at the rear.

Containers over 30,000 kg should be loaded in centre position of trailer (up to 45,000kgs).
 40' containers should also be loaded in centre position of trailer (up to maximum of 45,000kgs).

Single containers (regardless of weight) should be loaded in centre position

Loading with these specifications will avoid over-loading suspension, tow tractor or deck point at landing leg/trestle and at the same time will ensure there is sufficient load on drive axle of tug truck to give traction.



These instructions have been produced taking account of most operating conditions. Operators should be aware that circumstances may require them to exercise additional caution whilst operating these trailers.

NOTE TO OWNERS AND OPERATORS

At Elphinstone Engineering we are proud of the products we design and build and continually strive to improve. We hope that you get productivity, longevity and enjoyment out of using our products.

Our objective is to make our products as safe, practical and user friendly as possible but in our quest to build such products to cope with the conditions and environments that our equipment operates in plus meet all rules and regulations we do rely on you as the operator to use your skills and operate this equipment in a sensible manner.

This manual has been put together to help you operate the unit safely and in the manner it is designed to be used.

If you have any questions about the operation or are unsure of anything contained in the manual please do not hesitate to contact us. We particularly welcome suggestions on how we can improve our units.

Our offices are generally manned from 6am to 6pm 5 days per week and some Saturdays. If the problem is urgent then follow the prompts to get to after hours service. You will normally get one of us 24 hours a day/7 days week.

FREECALL 1800 030 019 – AUSTRALIA WIDE

TASMANIA
36 Tasman Highway
TRIABUNNA:
Phone: 03 6257 3242

VICTORIA
2/670 Somerville Road
SUNSHINE
Phone: 03 9311 6366

**On behalf of the Elphinstone
Engineering and Elphinstone Weighing
System teams**

Graeme Elphinstone
MANAGING DIRECTOR



ELPHINSTONE SEASKEL TRAILER

DRIVER INSTRUCTION COMPLETED:

DRIVER'S NAME:

DRIVER'S SIGNATURE:

INSTRUCTOR'S NAME:

INSTRUCTOR'S SIGNATURE:

DATE:

Internet Site: www.elph.com.au