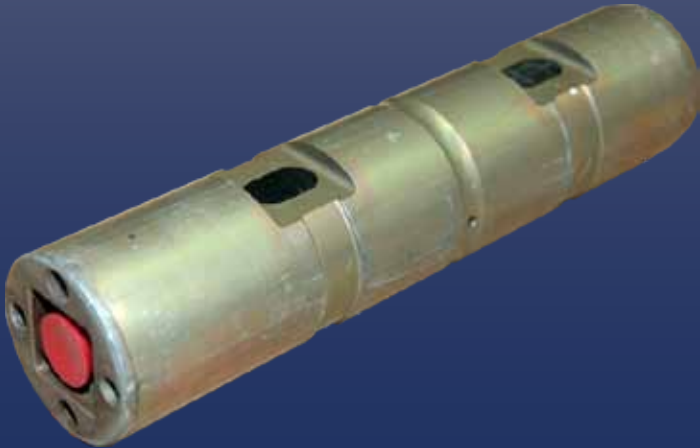


Loadcell Model 2701

Product Specification



For use in: Heavy Duty Mining and Special Applications.



www.elph.com.au

Assembly Numbers

29/SPB2701VB Loadcell

Structural Configuration

Double ended, rigid-mount shear pin
Compression loading

Bare Weight

10.1kg

Static Capacity

24,000kg

Dynamic Capacity

16,000kg

Safe Overload

100% of Static Capacity

Ultimate Overload

Minimum of 300% of Static Capacity

Loadcell Body Material

4340 alloy steel, heat treated to 180,000psi yield strength

Connector

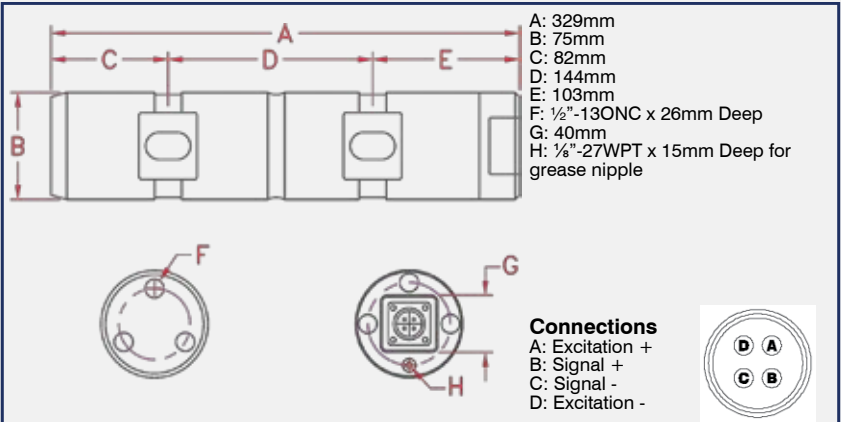
4 pin Military style, injection moulded

Cable

Custom 4 core with polyurethane jacket

Electrical

Excitation: 15 volts (AC or DC)
5-10 volts recommended
Output: 0.5.mv/v @ 12,700kg
Impedence: 350Ω +/- 1.0Ω
Isolation: 500MΩ at 50 volts



Mounting Requirements

Custom Bushing. Refer to Elphinstone for details to suit specific applications.

Capacity

Maximum Dynamic Load	16,000kg (35,200 lb)
Maximum Static Load	24,000kg (52,900 lb)

Coat all bolts with anti-seize

Precautions

Do not strike an Arc on the loadcell body with a welder. It is OK to use the loadcell to position the Mounting Bushes for tack welding only. Remove the loadcell to complete the welding procedure. Do not damage the cover plate as this protects delicate strain gauges.

Take care to protect the loadcell connector/cable as this can not be replaced in the field.

Fit protection for the loadcell connector from stones and foreign objects which may damage it.

Do not damage or paint over the Part/Serial Number identification tag.

IMPORTANT

Loadcell must be mounted in accordance with Elphinstone instructions. Failure to do so may void warranty. Specifications subject to change without notice. These specifications supercede all previous specifications as of October 2006.

PROUDLY AUSTRALIAN



1800 030 019
www.elph.com.au

**Tasmania
Head Office**

Address: 36 Tasman Highway, Triabunna, TAS 7190
Phone: (03) 6257 3242
Fax: (03) 6257 3573
Email: tri.office@elph.com.au

**Victoria
Mainland Office**

Address: 670 Somerville Road, Sunshine West, VIC
3020
Phone: (03) 9311 6366
Fax: (03) 9311 6466
Email: vic.office@elph.com.au